



See in a new way.

Product Details

Product Name:	Lensbaby Macro Converters
MSRP:	\$50
SKU:	LBMC
UPC:	188772003525
Sale date:	February 2, 2012
Packaging:	Retail Box
Box Language:	English

Product & Packaging Information

(dimensions provided as Length x Width (Depth) x Height)

Dimensions and weight without packaging

US: 1.32" x 1.32" x 2.08"

Metric: 3.35cm x 3.35cm x 5.28cm

Dimensions and weight with packaging:

US: 2.5"x2.5"x2.75"

Metric: 6.35cm x 6.35cm x 6.99cm

US Weight: 0.92oz

Metric Weight: 26.1g

US Weight: ~ 3.25 oz

Metric Weight: ~ 92.13g

Lensbaby Macro Converters Description:

The Macro Converters are compatible with all Lensbaby lens bodies and optics, making macro photography available to all new and existing Lensbaby photographers with multiple options above and beyond the existing Lensbaby Macro kit.

The Lensbaby Macro Converters include an 8mm converter and a 16mm converter. They can also be stacked together to make a 24mm converter. The Macro Converters simply screw into the Lensbaby lens body – and then the optic screws into the converter. For a list of maximum close focus distance when the Macro Converters are used with various Lensbaby lens bodies and optics, please see the chart below.

For even closer focus options, it is also possible to use the existing Lensbaby Macro Kit in conjunction with the Macro Converters with the Double Glass, Single Glass, Plastic, and Soft Focus Optics.

Lensbaby Macro Converters Product Specs:

- one 8mm converter
- one 16mm converter
- Stacked together they become a 24mm converter
- Compatible with all Lensbaby lens bodies and optics
- Focus range – please see chart below
- Focus range is slightly closer when optics are used with other Lensbaby lens bodies including Muse and Control Freak.

Close-Focus Distance Chart for Most Popular Lensbaby Products			
Lens body + Optic	Macro Converter	Maximum Close-Focus Distance with Optic + Macro Converter (measured from front of optic to subject of photo, in inches)	Maximum Close-Focus Distance with Optic + Macro Converters + +4 and +10 Macro Kit filters in inches (for the absolute closest focus possible).
Composer/Composer Pro with Double Glass (minimum focus: 18")	+8 mm	8.13"	1.9
	+16 mm	6"	1.7
	+24 mm	5"	1.5
Composer/Composer Pro with Sweet 35 (minimum focus: 7.5")	+8 mm	3.25"	N/A
	+16 mm	2.25"	N/A
	+24 mm	1.63"	N/A
Composer/Composer Pro/Scout with Fisheye (minimum focus: .5")	+8 mm	0"	N/A

Recommended Lensbaby Products for use with Macro Converters:

- Lensbaby Composer Pro (LBCPC, LBCPN, LBCPS, LBCPP, LBCPO)
- Lensbaby Composer (LBCC, LBCN, LBCS, LBCP, LBCO)
- Lensbaby Muse (LBM2C, LBM2N, LBM2S, LBM2P, LBM2O, LBMP, LBMPN, LBMP, LBMPPO)
- Lensbaby Control Freak (LBCFC, LBCFN, LBCFS, LBCFP, LBCFO)
- Lensbaby Scout (LBSFEC, LBSFEN, LBSFES, LBSFEP, LBSFEO)
- Lensbaby Double Glass Optic
- Lensbaby Optic Swap Kit
- Lensbaby Sweet35 Optic
- Lensbaby Fisheye Optic
- Lensbaby Soft Focus Optic

Lensbaby Macro Converters Box Contents:

- 8mm Macro Converter
- 16mm Macro Converter
- Clear plastic storage case
- User guide

For hi-res sample and product images please visit <http://lensbaby.com/resource/> (Please note, this link is not for publication.)

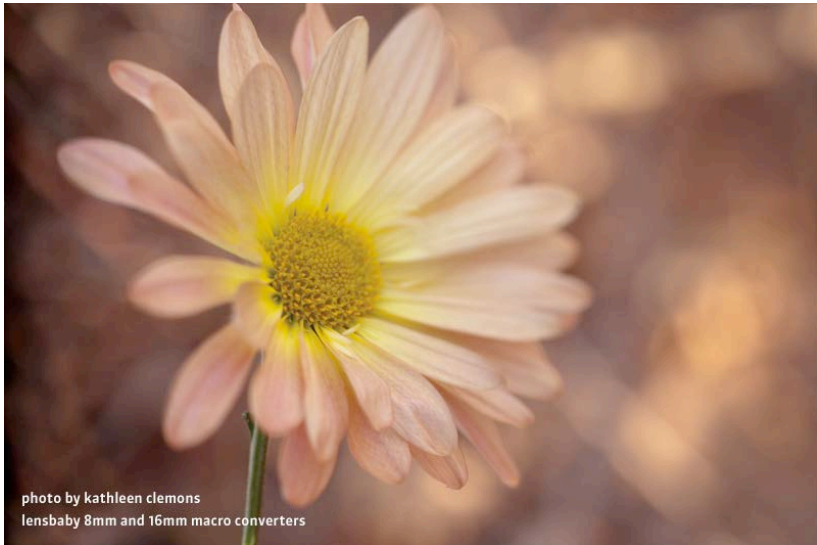


photo by kathleen clemons
lensbaby 8mm and 16mm macro converters

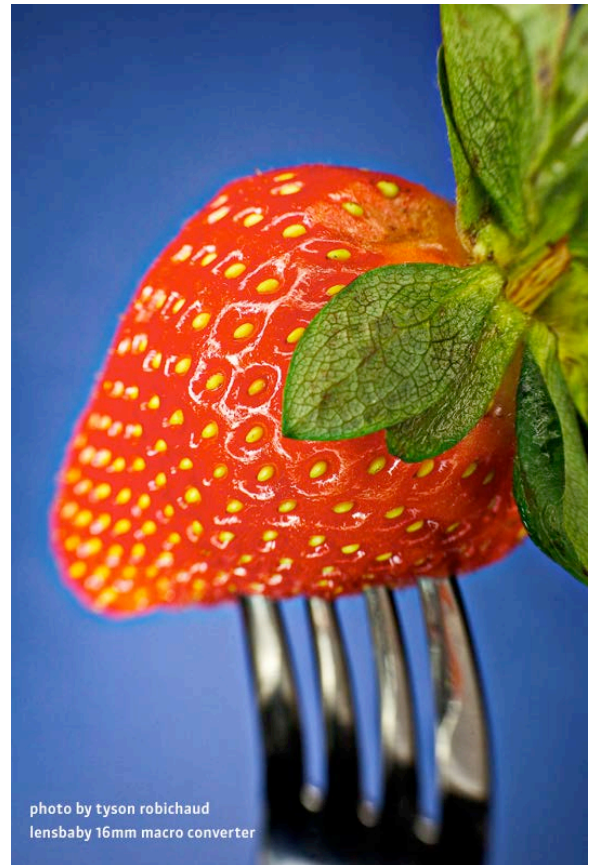


photo by tyson robichaud
lensbaby 16mm macro converter